

DC-Analyser



DC-Analyser

Tool for Fujifilm Tape Health Check Service

Features

- 1** ***Analyses LTO tape cartridges by reading only cartridge memory (CM) information, which reduces the risk of data leakage***
- 2** ***Offers quick and easy on-site tape diagnostics anywhere***
- 3** ***Features precise, easy-to-understand tape diagnostic functions***

The FUJIFILM DC Analyser adds security and reliability to your LTO tape backup system.

In today's information society, enterprises must consider how to make their data-tape backup systems more reliable and secure. Till now, there has been no real way of assessing the condition of backup tapes, so users have been at risk of unavoidable backup troubles. The Fujifilm DC Analyser can prevent backup troubles by providing LTO tape diagnostics. Simply install the software, connect to a computer, and the Analyser is ready to start.

Tool for Fujifilm Tape Health Check Service

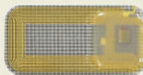
Quick, inexpensive, offline LTO tape diagnostics anywhere using only cartridge memory and barcode information.

1 Analyses LTO tape cartridges by reading only cartridge memory (CM) information, which reduces the risk of data leakage

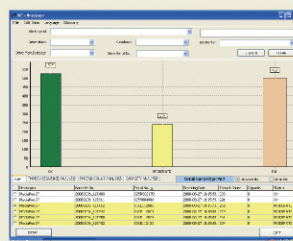


The DC Analyser reads mount history from the CM embedded in the LTO tape. It does not read the information recorded on the tape, thus avoiding risk of leaking confidential information.

(Cartridge Memory)

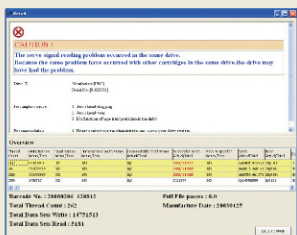


2 Offers quick and easy on-site tape diagnostics anywhere



Begin analysing tapes right away simply by connecting the DC Analyser to a computer. After placing an LTO tape on the DC Analyser, the data will be read in about 7 to 10 seconds. The DC Analyser can read the barcode and CM simultaneously, allowing it to associate and save the CM information with the barcode information.

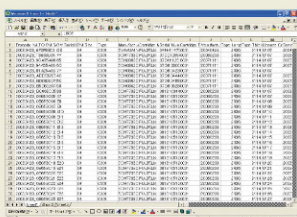
3 Features precise, easy-to-understand tape diagnostic functions



The CM's mount history holds no more than four history entries, but the DC Analyser's database can store up to 18 mount history entries for each LTO tape. This allows precise diagnostics by reviewing the tape's condition over the last 18 usages.

Based on FUJIFILM's wealth of experience as a tape manufacturer, the DC analyzer analyses data and diagnoses LTO tape cartridge. It presents the results to storage administrators in clear and understandable messages. By accumulating data on analyzed tapes, the DC Analyser judges whether the tape or the drive is the source of error, and indicates the result with easy-to-understand messages.

4 Various Analysis Functions



The software package has a function for listing tape diagnostic results in an Excel spreadsheet and a contextual search function to find specific tapes or drives.



Parameter	Unit	Specifications
Overall dimensions	mm	112 x 252 x 80 (W x L x H)
Weight	g	310g
Operating conditions	°C	Temperature: 5 - 45°C Humidity: 5 - 95%
Operating system	-	Windows XP/Vista



Convenient Carry Case

We also offer a compact and light carry case for the DC Analyser - protects DC Analyser from shock.